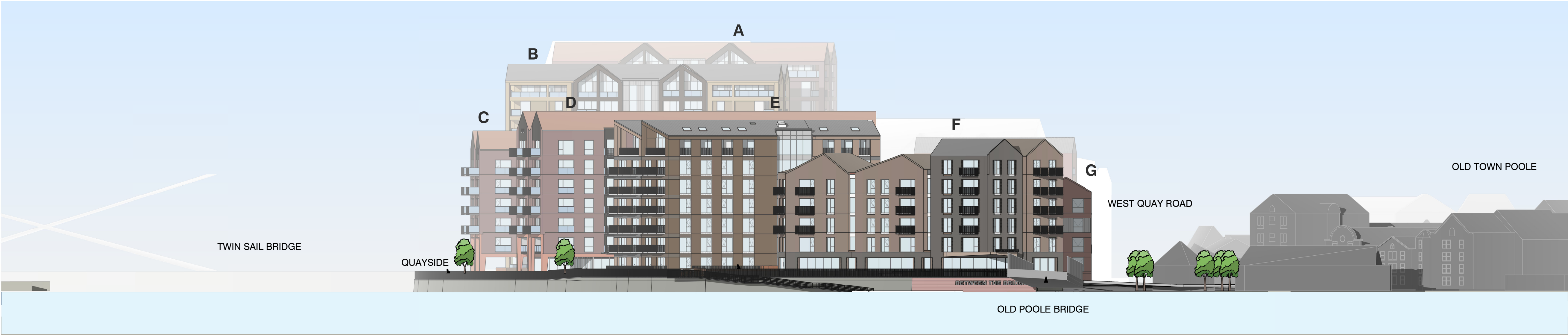
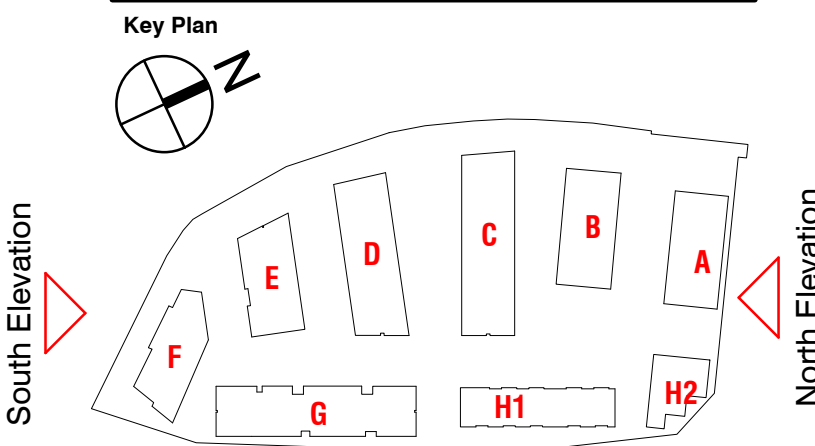


Orientation



South Elevation
1 : 350



North Elevation
1 : 350

| | | | | |
|-----|----------|---|----|----|
| P04 | 04.02.22 | Amendments to planning drawings issued on 26.03.21 | SM | AR |
| P03 | 26.03.21 | Amendments to planning drawings issued on 05.04.19 | SS | AR |
| P02 | 08.07.19 | Amendments to planning drawings issued on 05.04.19 | SM | AR |
| P01 | 05.04.19 | Updated information for planning issued on 28.05.18 | SM | AR |

| Rev. | Date | Revision | By | Checked |
|------|------|----------|----|---------|
|------|------|----------|----|---------|

leonard design architects
4th floor, Albion House
5-13 Canal Street
Nottingham, NG1 7EG, United Kingdom
t. +44 (0) 115 945 0080
e. office@leonarddesignarchitects.com

Client
Reuben & Morgan Ltd.

Project
West Quay Road, Poole

Drawing Title
North & South Elevations

| | |
|---------------------------------------|-------------|
| Project Number | Suitability |
| 0625 | S4 |
| Drawn by | Checked by |
| LW | SM |
| Scale @A1 | Date |
| As indicated | 05.04.19 |
| File Identifier | Revision |
| 0625 - LDA - ZZ - ZZ - DR - A - 08061 | P04 |

Purpose of Issue
PLANNING

Project Status
PLANNING

